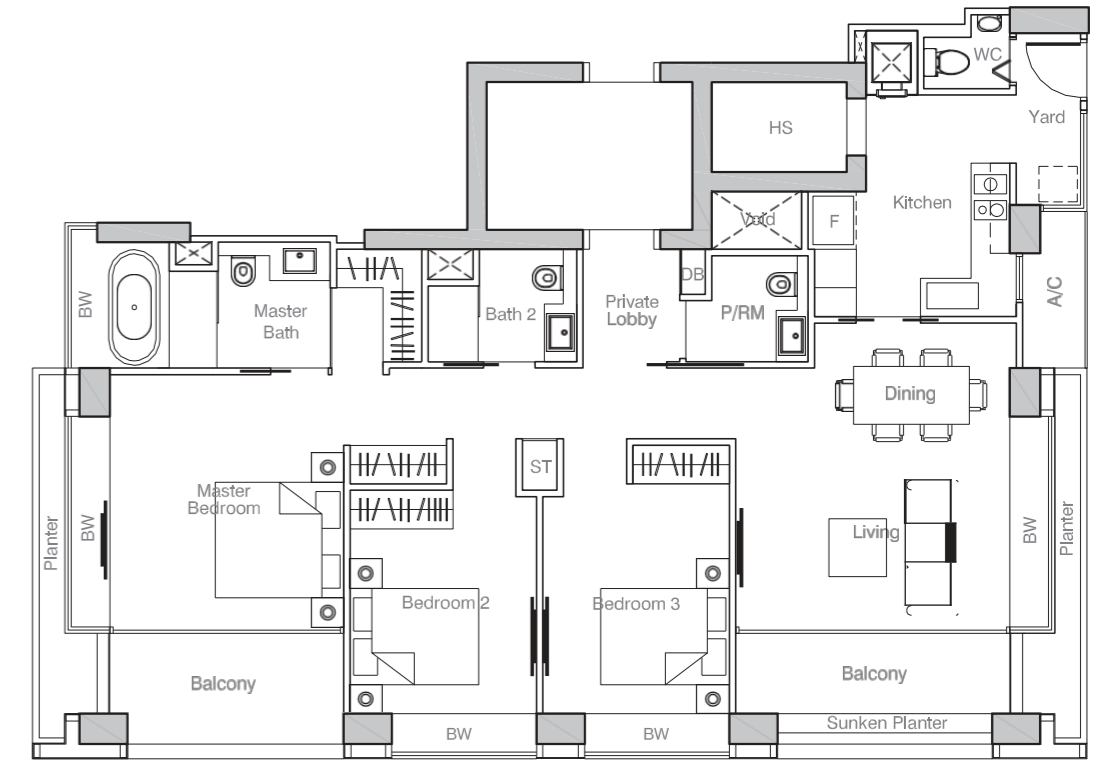


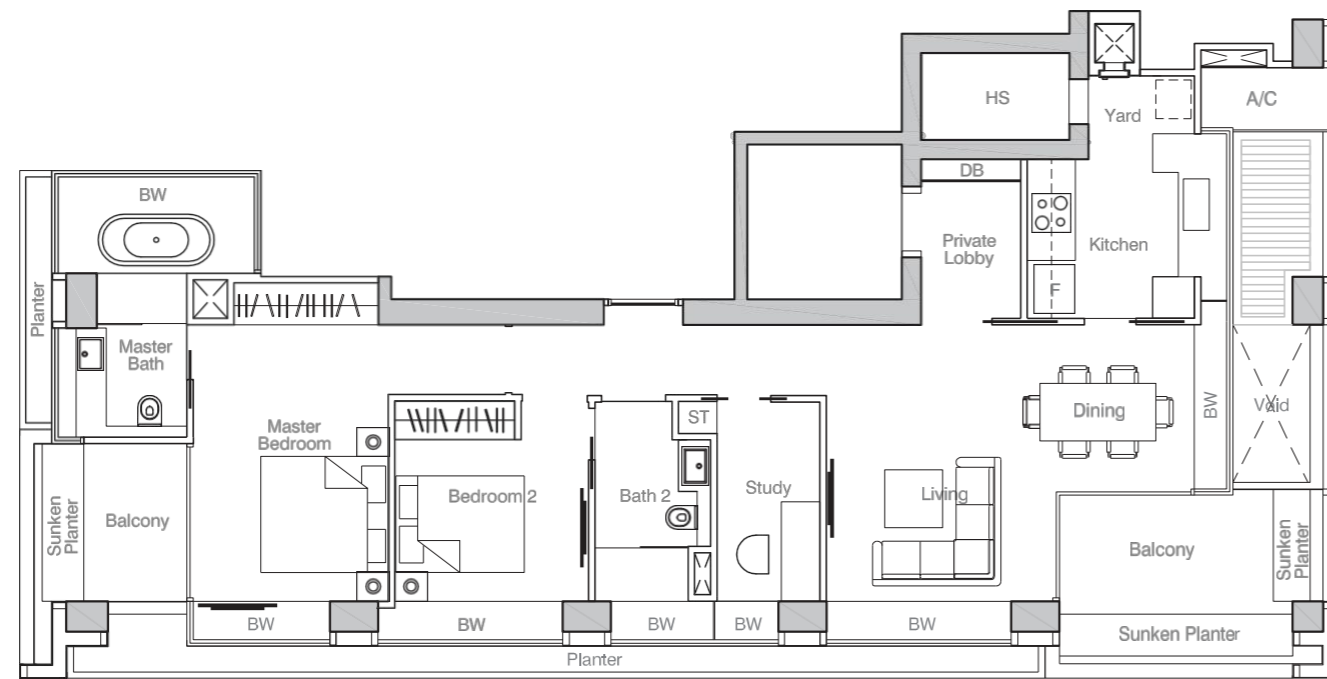
TYPE B
 124 sqm (1,335 sq ft)
 #04-04 – #09-04
 #12-04 – #13-04
 #16-04 – #18-04
 #22-04 – #24-04



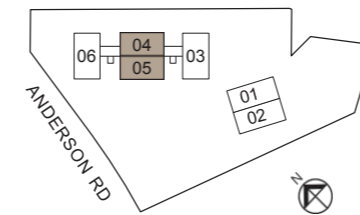
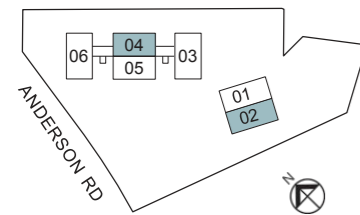
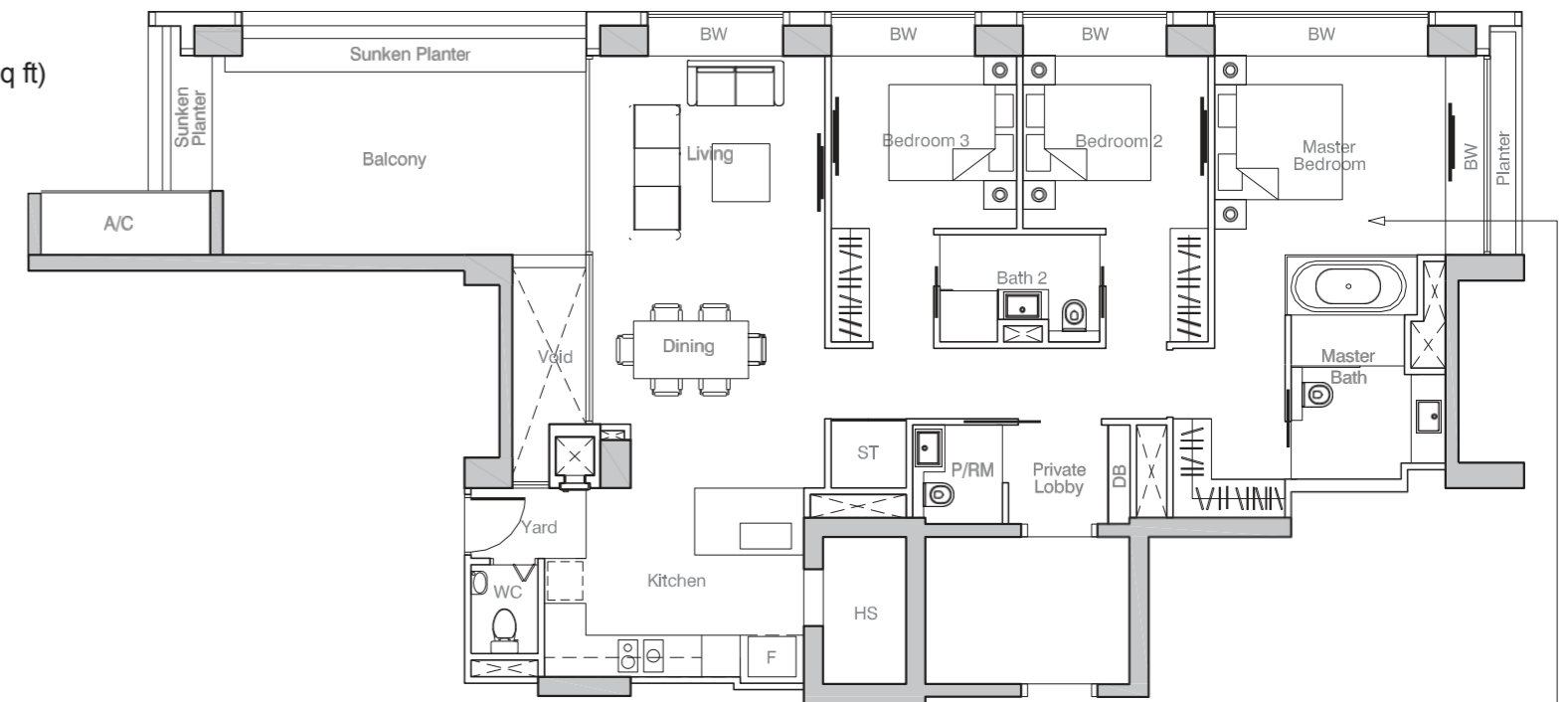
TYPE C
 147 sqm (1,582 sq ft)
 #04-05 – #09-05
 #12-05 – #13-05
 #16-05 – #18-05
 #22-05 – #24-05



TYPE B1
 143 sqm (1,539 sq ft)
 #02-02 – #13-02



TYPE C1
 156 sqm (1,679 sq ft)
 #25-04 – #33-04

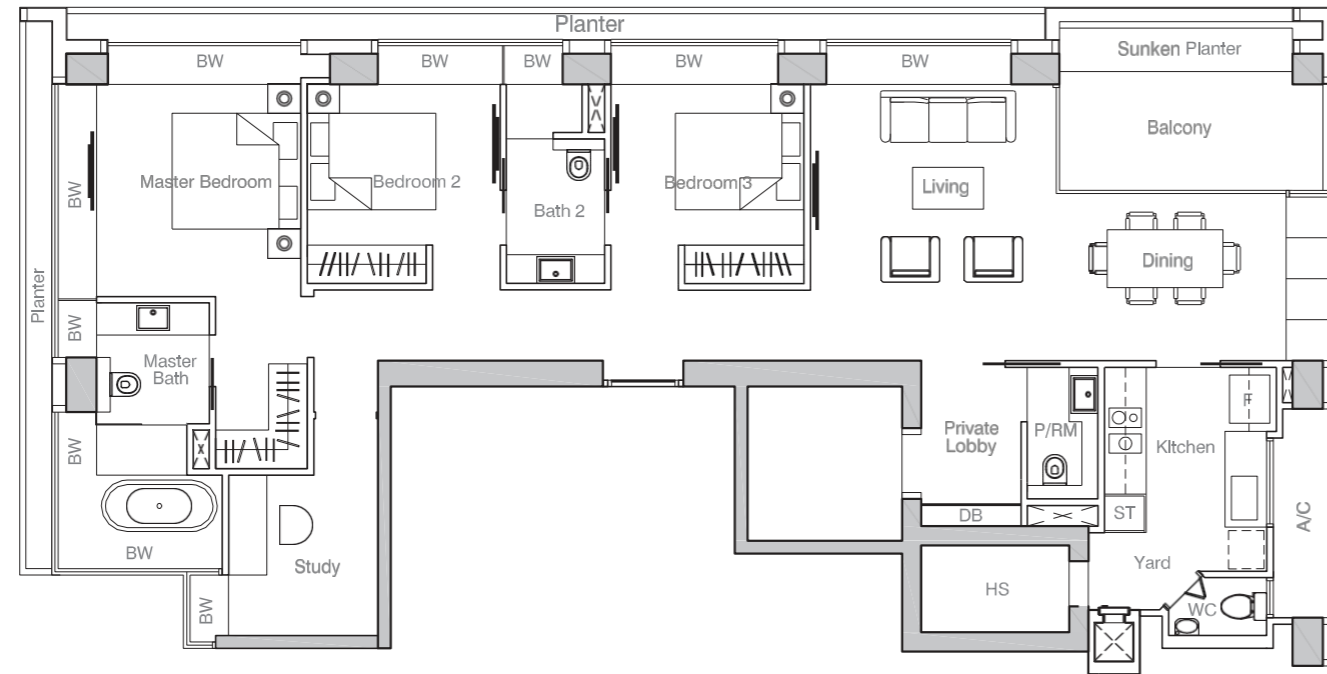


33-04
 CEILING HEIGHT FOR MASTER BEDROOM
 LOWER THAN OTHER BEDROOMS

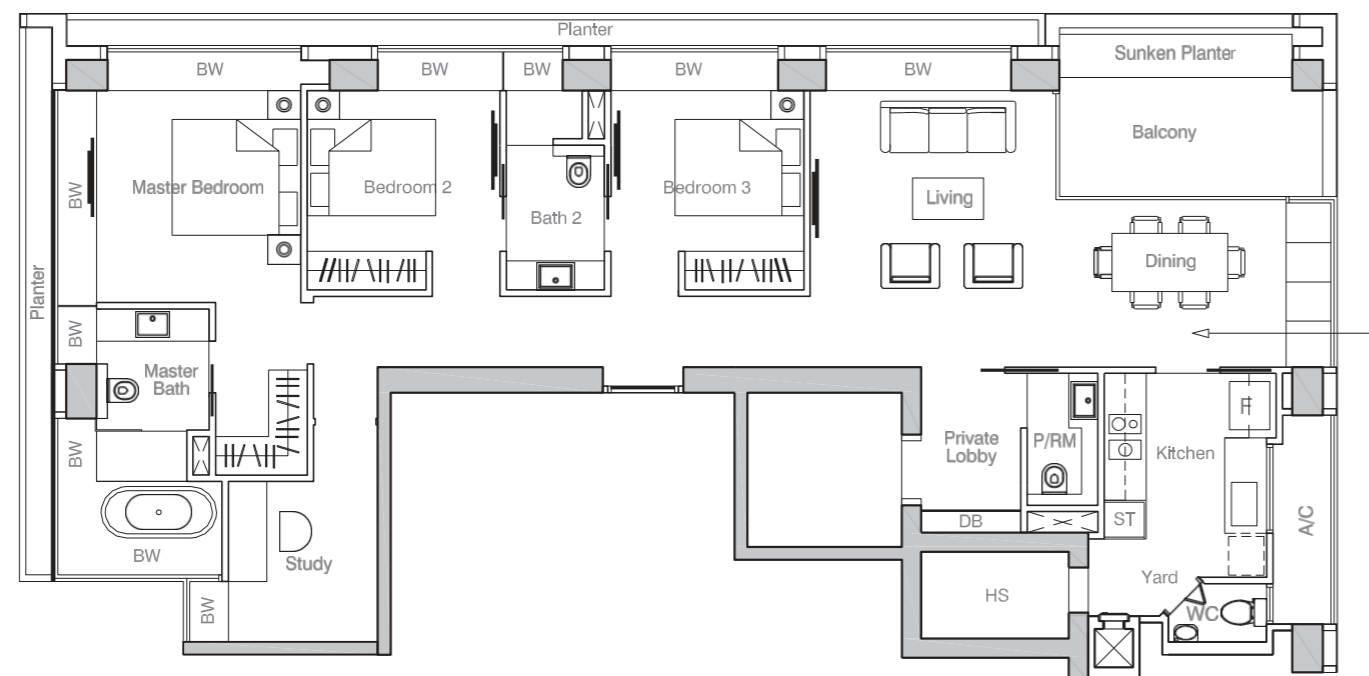
3-BEDROOM + STUDY

4-BEDROOM + STUDY

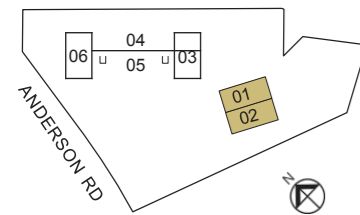
TYPE C2
164 sqm (1,765 sq ft)
#02-01 – #13-01



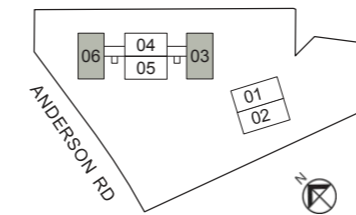
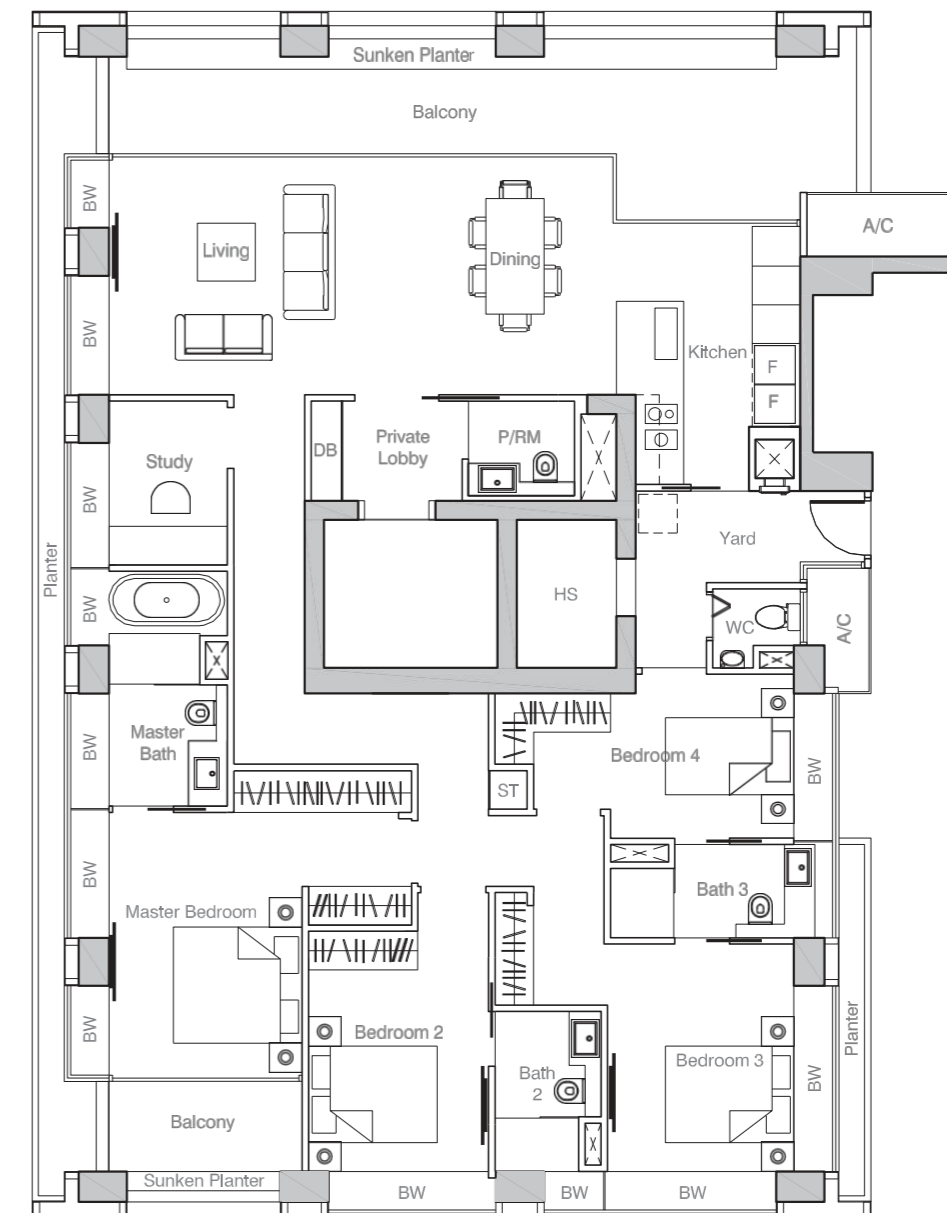
TYPE C3
164 sqm (1,765 sq ft)
#16-01 – #21-01
#16-02 – #21-02 (Mirror)



21-02
CEILING HEIGHT FOR DINING AREA
LOWER THAN LIVING AND OTHER BEDROOMS

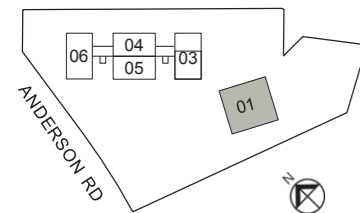
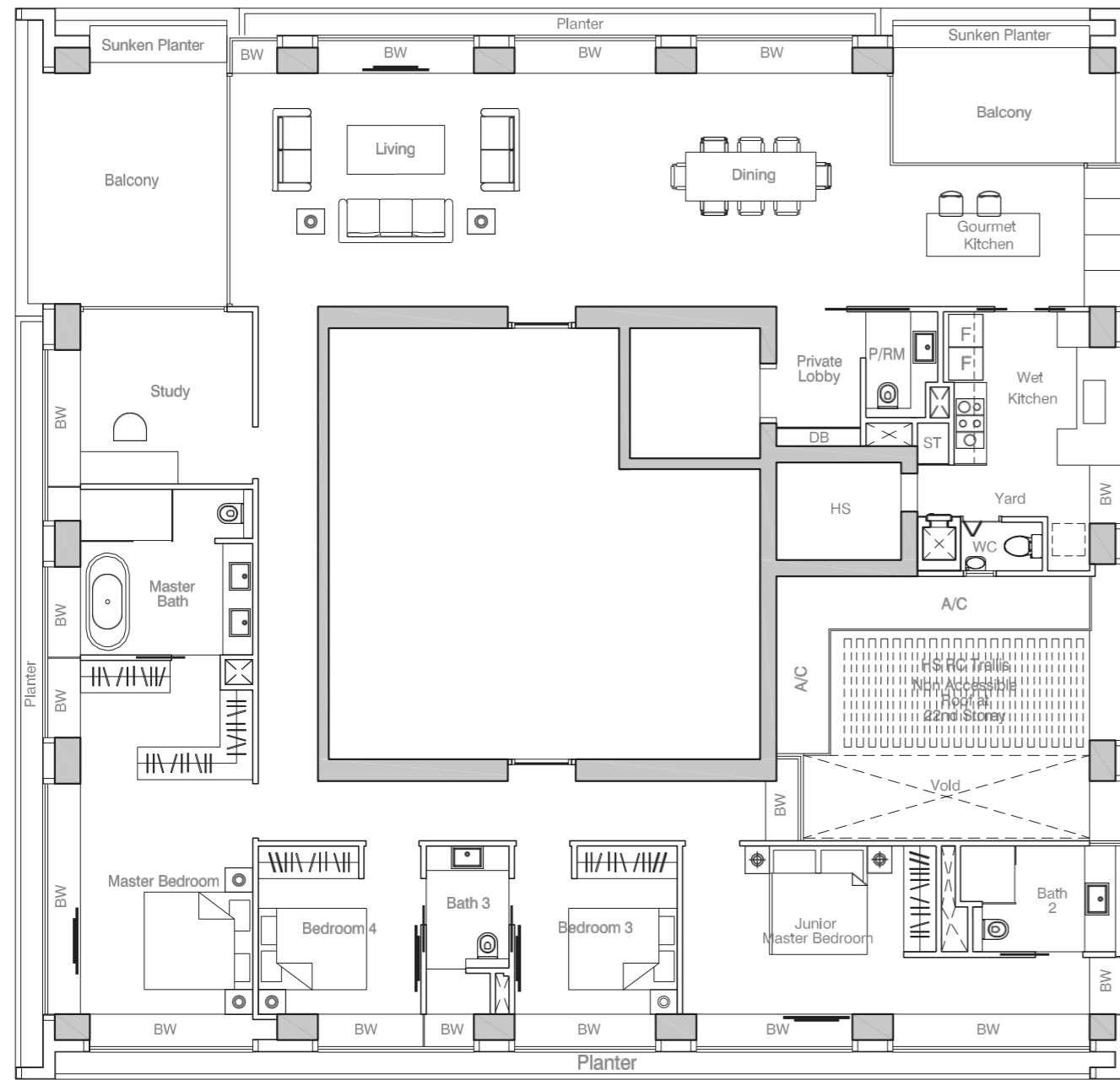


TYPE D
230 sqm (2,476 sq ft)
#03-03 – #10-03 (Mirror)
#12-03 – #13-03 (Mirror)
#16-03 – #23-03 (Mirror)
#04-06 – #10-06, #15-06
#21-06 – #23-06



4-BEDROOM + STUDY

TYPE D5
 310 sqm (3,337 sq ft)
 #22-01 – #35-01



Developed by:



City Developments Limited (CDL) is a leading global real estate operating company with a network spanning 103 locations in 29 countries and regions. Listed on the Singapore Exchange, the Group is one of the largest companies by market capitalisation. Its income-stable and geographically-diverse portfolio comprises residences, offices, hotels, serviced apartments, integrated developments and shopping malls.

With a proven track record of over 55 years in real estate development, investment and management, CDL has developed over 43,000 homes and owns over 18 million square feet of lettable floor area globally. Its diversified global land bank offers 4.1 million square feet of developable gross floor area.

Managed by:
 Trentwell Management Pte. Ltd.

Reasonable care has been taken in the preparation of this brochure, and the construction of the scale model and the show-flat (collectively the Collaterals), but the Developer does not warrant the accuracy of the Collaterals. The statements, information and depictions in the Collaterals may not be relied upon as statements or representations of fact, and they are not intended to form any part of the contract for the sale of the housing units. In particular, visual representations such as pictures and drawings are artist's impressions only, and are not representations of fact. The brand, colour and model of all materials, fittings, equipment, finishes, installations and appliances supplied shall be provided subject to the Developer's architect's selection, market availability and the sole discretion of the Developer. All information contained in the Collaterals, including equipment, materials, fittings, finishes, installations and appliances description, plans and specifications, are current at the time of printing, and are subject to such changes as are required by the Developer or the relevant authorities. The floor areas stated in the brochure are approximate measurements and subject to final survey.

Signature Residential Services: Please note that the use of these services are chargeable as they are provided by third-party service providers ("Service Providers"). While our Residential Host will assist in making arrangements, all costs incurred for use of these services are to be borne by residents. Provision of these services may be modified according to availability and at the discretion of the Service Providers. Other terms and conditions apply.

All information is current at time of printing and is subject to change. This brochure is printed on eco-friendly paper, July 2019.